

The Industry's Fastest Inspection System!

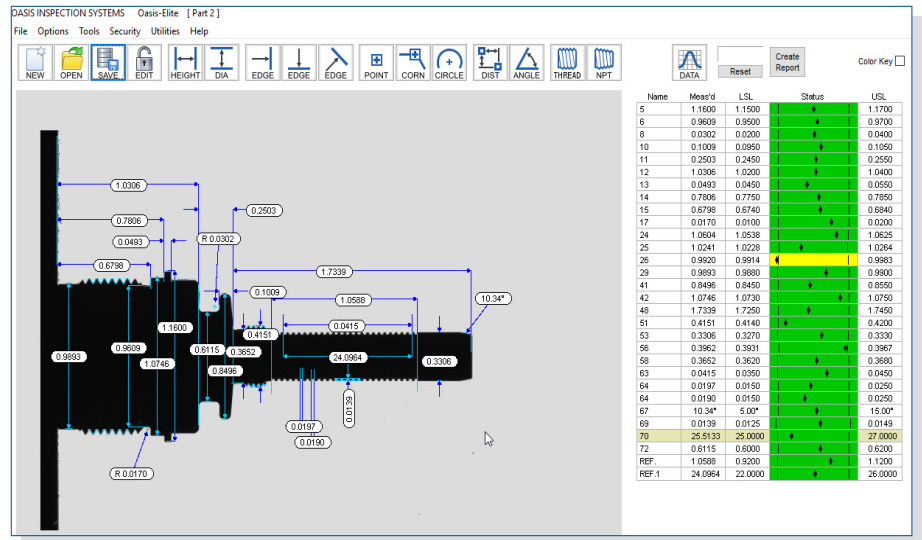
Reduce Measurement Time by Measuring Multiple Dimensions Instantly & Simultaneously

CoreX2

Field of View: 3.25" x 2.60"

The CoreX2 is an optical profile inspection system that combines accuracy and precision with a fast, easy to use operator interface. This inspection system features the most advanced reliable software in the industry which captures a part in a digital format and converts the captured image into real dimensional data.

- User-Friendly Full-Feature Software
- Data Exportable to SPC Software
- Quick Return on Investment



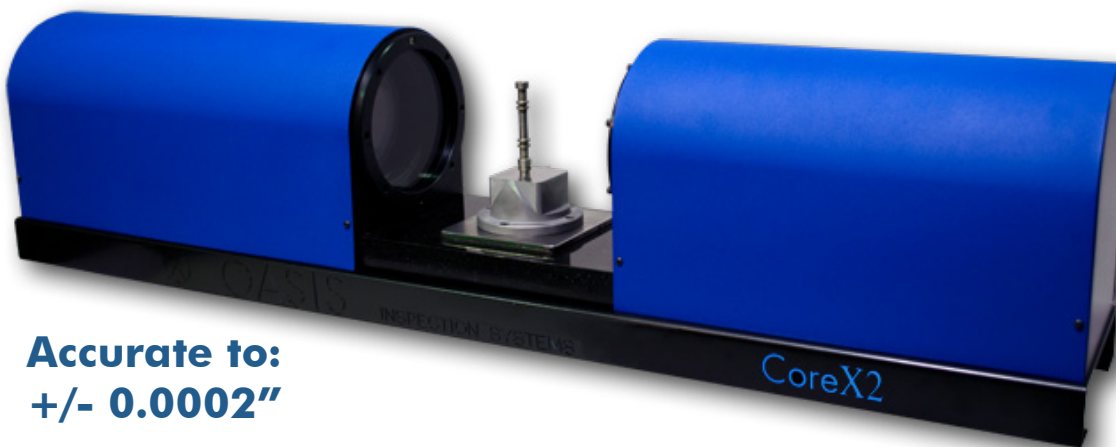
Automatic Inspection Reporting

Compare Dimensional Data

Set Precision Tolerances

Easily Identify Dimensional Errors

Large Field of View



**Accurate to:
+/- 0.0002"**

Ready to Inspect

- OASIS CoreX2
46" W x 9" D x 12" H (78 lbs)
- On-Board Computer
- Full-Feature Software
 - Monitor, Keyboard & Mouse
- Quick Start Guide

OACOREX215212096
\$36,900

Speed, Accurate, Easy. Measure On.

www.oasisinspectionsystems.com