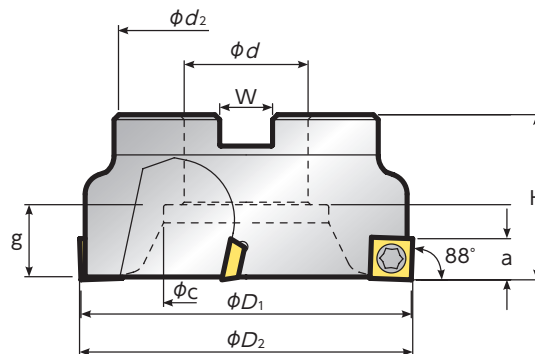
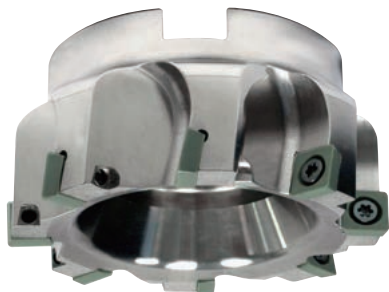


HSM series

high speed hear-ill

● Lead angle 88 degree - SDW43 (A.R.+12° ,R.R.0°)



● Inch size cutters

Item Number	Stock		Dimensions (inch)									Weight (lbs)	Price
			ϕD_1	ϕD_2	H	a	ϕd	W	ϕd_2	ϕc	g		
P250R100-SDW43-4C	●	4	2.500	2.590	2.000	.400	1.000	.38	2.290	.820	.787	1.7	\$XXX.XX
P300R100-SDW43-6C	●	6	3.000	3.070	2.000	.400	1.000	.38	2.290	.820	.787	2.2	\$XXX.XX
P400R150-SDW43-8C	●	8	4.000	4.070	2.000	.400	1.500	.64	3.200	2.000	.875	3.5	\$XXX.XX
P500R150-SDW43-10C	●	10	5.000	5.070	2.000	.400	1.500	.64	3.200	2.000	.875	5.2	\$XXX.XX

● Inserts

 Fig.1: SDCW43	 Fig.2: SDCW43PE with wiper	Item Number	R	Fig.	Silicon Nitride	
					SX6	Price
		SDCW 432 T0420	.031	1	●	XX.XX
		SDCW 433 T0420	.047	1	●	XX.XX
		SDCW 434 T0420	.063	1	●	XX.XX
		SDCW 43PE T0420R*	.031	2	●	XX.XX

* Recommend using torque wrench @35lbs (4Nm)

* The insert must be installed in all insert pockets

● Recommend Cutting Conditions

Work Material	Grade	Dry	Wet	Cutting Speed (SFM)								Feed (IPT)					Depth of Cut (inch)	
				700	1200	1700	2200	2700	3200	3700	4200	.002	.004	.006	.008	.010		.012
K	SX6	●	●															~.220
Gray Cast Iron	SP9	●	○															~.220
Ductile Iron	SP9	●	○															~.220



FASTER THAN CARBIDE

Scan to view



General Catalog

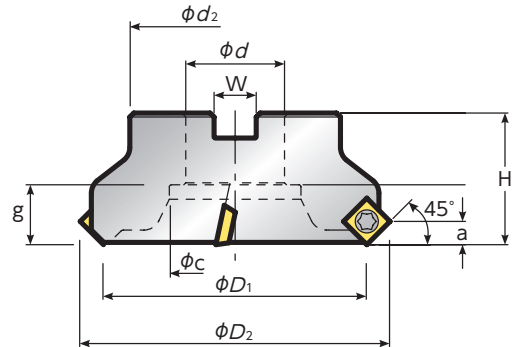
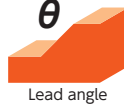
Order the complete
NTK General Catalog today



● Lead angle 45 degree - SDW43 (A.R.+12° ,R.R.0°)



$\theta : 45^\circ$



● Inch size cutters

Item Number	Stock		Dimensions (inch)									Weight (lbs)	Price
			ϕD_1	ϕD_2	H	a	ϕd	W	ϕd_2	ϕc	g		
A300R100-SDW43-6C	●	6	3.000	3.740	2.000	.260	1.000	.38	2.290	.820	.787	2.3	\$XXX.XX
A400R150-SDW43-7C	●	7	4.000	4.740	2.000	.260	1.500	.64	3.200	2.000	.875	3.3	\$XXX.XX
A500R150-SDW43-8C	●	8	5.000	5.740	2.000	.260	1.500	.64	3.810	2.120	.871	5.0	\$XXX.XX

● CBN Wiper Insert: Can install 1 or 2 CBN Wiper Inserts with ceramic inserts.

Shape	Item Number	CBN	
		B30	B52
<p>* Slightly taller insert than ceramic inserts so can be installed in standard cutter. For $\theta = 45^\circ$</p>	SDW 1204-45-50R	92.29	132.66

● Spare Parts

Insert Screw	Torx Wrench
<p>FSI21-5.0 * 12.45</p>	<p>T20</p>

● Inserts

Item Number	R	Fig.	Silicon Nitride	
			SX6	Price
SDCW 432 T0420	.031	1	●	XX.XX
SDCW 433 T0420	.047	1	●	XX.XX
SDCW 434 T0420	.063	1	●	XX.XX
SDCW 43AE T0420*	—	2	●	XX.XX

* Recommend using torque wrench @35lbs (4Nm)

* The insert must be installed in all insert pockets

● Recommend Cutting Conditions

Work Material	Grade	Dry	Wet	Cutting Speed (SFM)							Feed (IPT)					Depth of Cut (inch)	
				700	1200	1700	2200	2700	3200	3700	4200	.002	.004	.006	.008		.010
K	SX6	●	●														~.200
Gray Cast Iron	SP9	●	○														~.200
Ductile Iron	SP9	●	○														~.200



FASTER THAN CARBIDE

Scan to view



General Catalog

Order the complete **NTK General Catalog today**

